



S-Carriage Setup

1. Jack bolt and bearings for the door-mounted prestretch roller should be loose to start (to allow adjustment toward or away from the door). Door latches should be set to hold door firmly against hard stop locations circled in red in the illustrations below (see illustration 1, 2, and 3).

Illustration 1

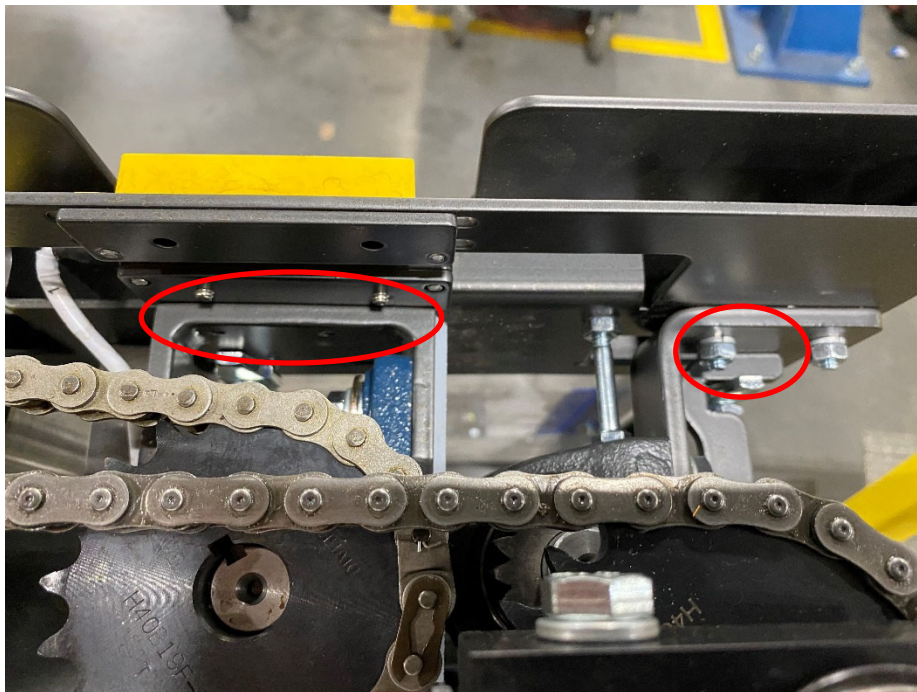




Illustration 2



Illustration 3





2. Ensure all mounting nuts, circled in red in the illustrations below, for the handles and latches are tight (see illustrations 4, 5, and 6).

Illustration 4



Illustration 5





Illustration 6



3. Close and latch the door. Adjust the door-mounted prestretch roller using the jack bolt for the top bearing and sliding the bottom bearing in its slots. When a snug gear mesh is achieved, tighten the jam nut on the jack bolt as well as the hardware in each bearing base to hold the roller in position (see illustrations 7, 8, and 9).

Illustration 7
(Jack Bolt)

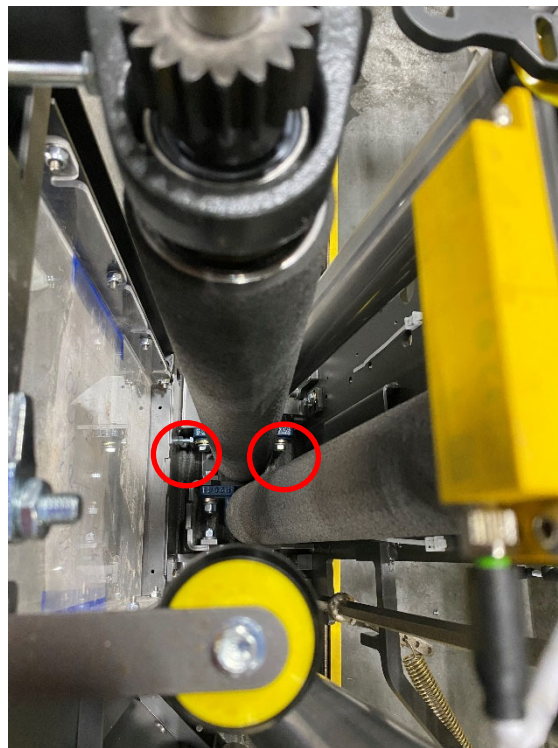




Illustration 8
(Bearing Adjustment)



Illustration 9
(Bottom Bearing)





4. Verify setup. Typically, if the gears do not mesh correctly, there is a very noticeable, audible difference while the carriage is running. The carriage may become louder, or there may be a repeating “clunk” noise or “chatter” if the gears are able to skip past each other. A measurement can be done with a caliper as a quick verification, although this is typically unnecessary. Per the illustrations below, measure from the outside of the drive gear’s hub to the outside of the door-mounted prestretch roller’s shaft (see illustrations 10, 11, and 12). The measurement for an acceptable mesh should be 2.624 ± 0.015 inches. Measurements outside this range may still be acceptable for reliable operation but could result in faster wear of the gear(s). Note: this is a difficult measurement to obtain accurately with the carriage fully assembled and while important, it’s mainly to be used as a reference.

Illustration 10

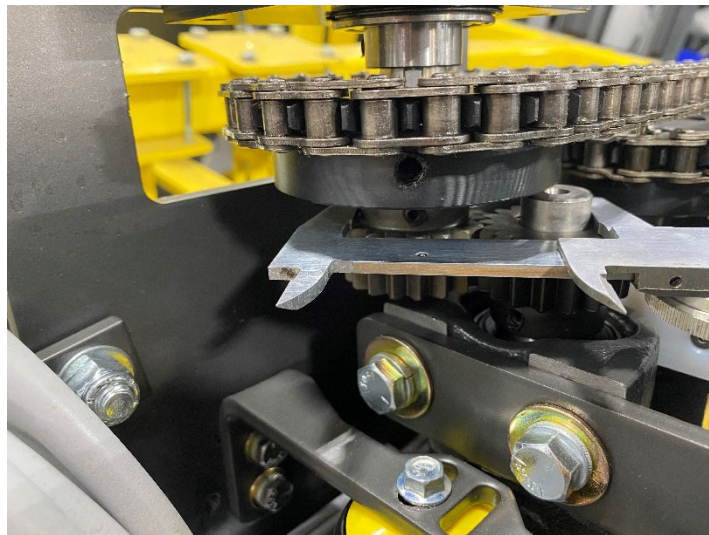


Illustration 11

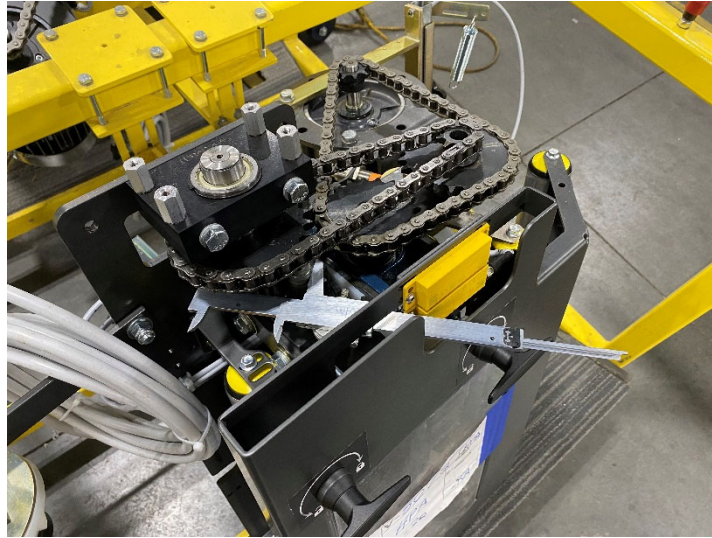


Illustration 12



5. Periodically check that the door is held firmly against the hard stop positions when closed and latched. Also, check that the mounting nuts for the handle and latch are tight. If the door is allowed to open slightly during operation, the gears may be able to skip teeth which will drastically increase wear.